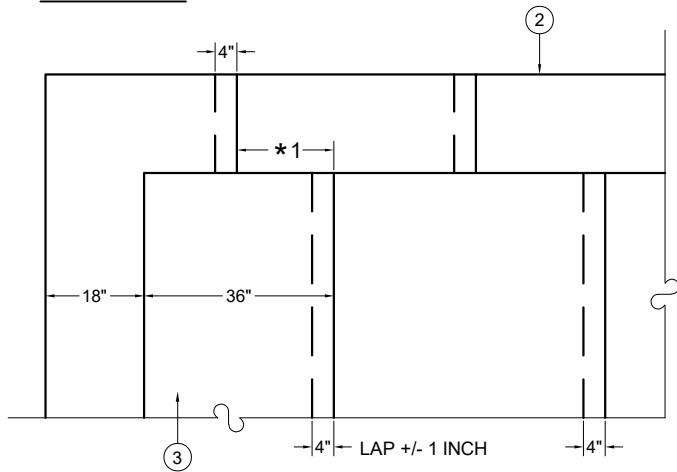
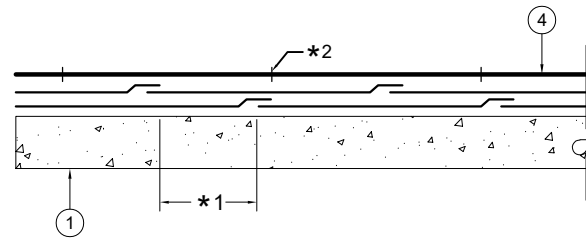


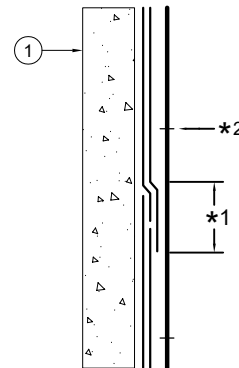
DETAIL #1: PLAN VIEW



DETAIL #2: SECTION VIEW, SIDE LAP



DETAIL #3: SECTION VIEW, END LAP



NOTES: nts

- ① "SUBSTRATE": * TYPICAL NORMAL WEIGHT CONCRETE
 - ② FIRST PLY: (A7400) "LAURENCO ROOFING - WPFG SHEET" SET IN FULL BED OF LAURENCO LIQUID ADHESIVE (A7005)
 - ③ SECOND PLY: "LAURENCO ROOFING - WPFG SHEET" (A7400), SET IN FULL BED OF LAURENCO LIQUID ADHESIVE (A7005)
 - ④ "SPC": STANDARD PROTECTION SHEET- SPC (A740) IN FULL BED OF LAURENCO LIQUID ADHESIVE (A7005)
- *1: DO NOT STACK LAPS. STAGGER LAPS BETWEEN 1ST AND 2ND PLY.
- *2: BUTT JOINTS OF SPC. UNLESS DETAILED OTHERWISE.
- * NORMAL WEIGHT CONCRETE IS PREFERRED. THE USE OF LIGHTWEIGHT STRUCTURAL CONCRETE REQUIRES USE OF MVS A/B (A38003 + A38101)