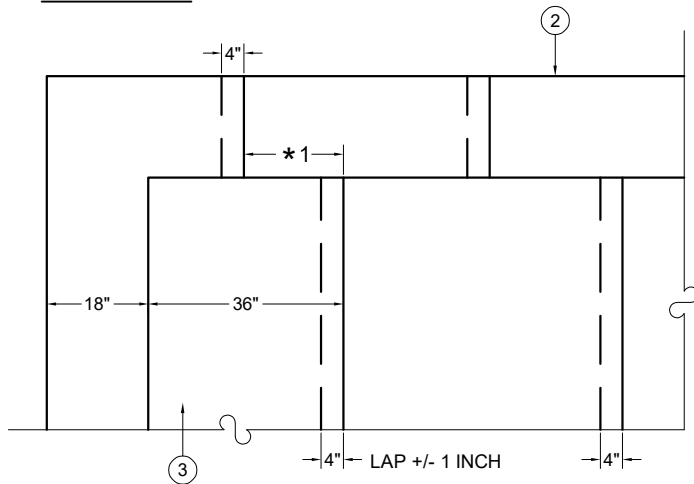
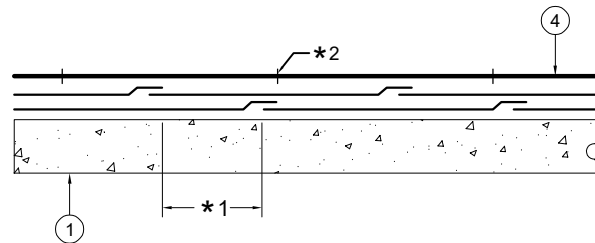


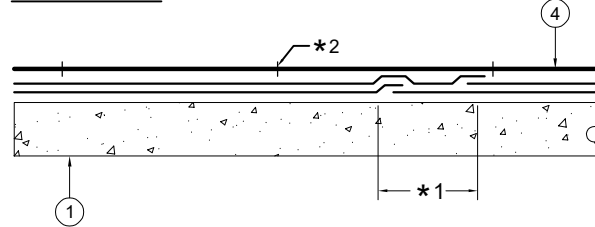
**DETAIL #1: PLAN VIEW**



**DETAIL #2: SECTION VIEW, SIDE LAP**



**DETAIL #3: SECTION VIEW, END LAP**



**NOTES: nts**

- ① "SUBSTRATE":  
TYPICAL NORMAL \* WEIGHT CONCRETE
  - ② FIRST PLY: (A7400)  
"LAURENCO ROOFING - WPFPG SHEET" SET IN FULL BED OF LAURENCO LIQUID ADHESIVE (A7005)
  - ③ SECOND PLY:  
"LAURENCO ROOFING - WPFPG SHEET" (A7400), SET IN FULL BED OF LAURENCO LIQUID ADHESIVE (A7005)
  - ④ "SPC": STANDARD PROTECTION SHEET- SPC (A740) IN FULL BED OF LAURENCO LIQUID ADHESIVE (A7005)
- \* 1: DO NOT STACK LAPS. STAGGER LAPS BETWEEN 1ST AND 2ND PLY.**
- \* 2: BUTT JOINTS OF SPC. UNLESS DETAILED OTHERWISE.**
- \* NORMAL WEIGHT CONCRETE IS PREFERRED. THE USE OF LIGHTWEIGHT STRUCTURAL CONCRETE REQUIRES USE OF MVS A/B (A38003 + A38101)**